



# AVAILABLE



## Manhattan Village Shopping Center Retail/Office Space for Lease



**Location:** 2645 Manhattan Blvd., Harvey, LA 70058  
(Located at the Major Intersection of Manhattan Blvd. and Lapalco Blvd.)

| <b>Available:</b> | <u>Unit</u>   | <u>Size</u>  | <u>Rent</u>     | <u>CAM</u>    | <u>Total</u> |
|-------------------|---|--------------|-----------------|---------------|--------------|
|                   | E-2A.....   | 2,070sf..... | \$2,900/mo..... | \$690/mo..... | \$3,590/mo   |
|                   | (Former Tutoring Location, open retail space with 2 restrooms)          |              |                 |               |              |
|                   | E-3.....  | 2,970sf..... | \$3,100/mo..... | \$990/mo..... | \$4,090/mo   |
|                   | (Former Chiropractor unit, Reception area with 9 rooms and 2 restrooms) |              |                 |               |              |

**Description:** Busy shopping center located on the corner of the Westbank's major intersection of Lapalco Blvd and Manhattan Blvd. Great access from both streets. Plenty of Parking. Traffic Count of +/- 42,000 vehicles per day. Great Visibility. Over 20k people in 5-minute drive time, 96k in 10-minute drive time and over 200k in 15-minute drive time. Come Join Fiery Crab, PJ's Coffee, Mochinut, Tutti Frutti, Subway, Fat Boy's Pizza & others!

**JACK STUMPF  
& ASSOCIATES, INC.**  
COMMERCIAL REAL ESTATE SERVICES

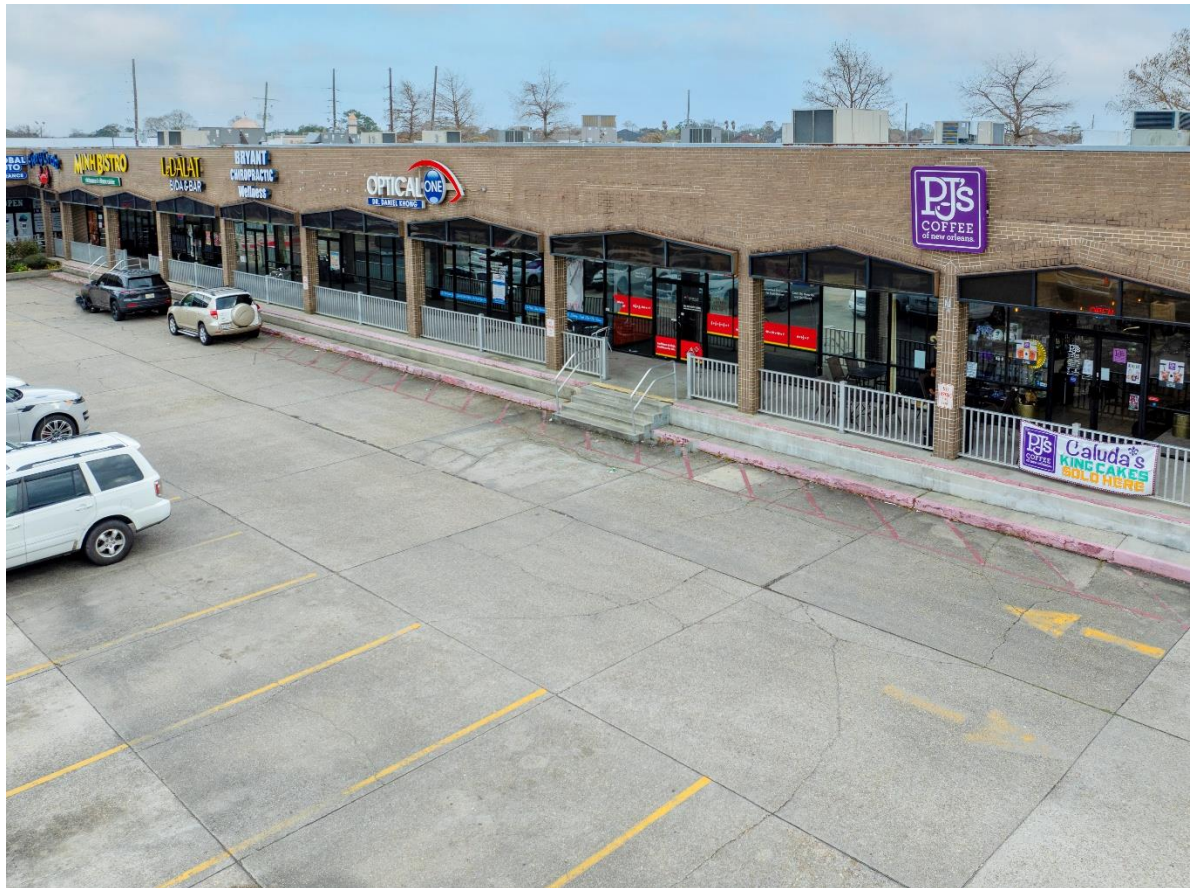
1700 Central Boulevard  
Harvey, Louisiana 70058  
(504) 366-6800  
www.jackstumpf.com

**Listing Agent:** Jon Cerruti

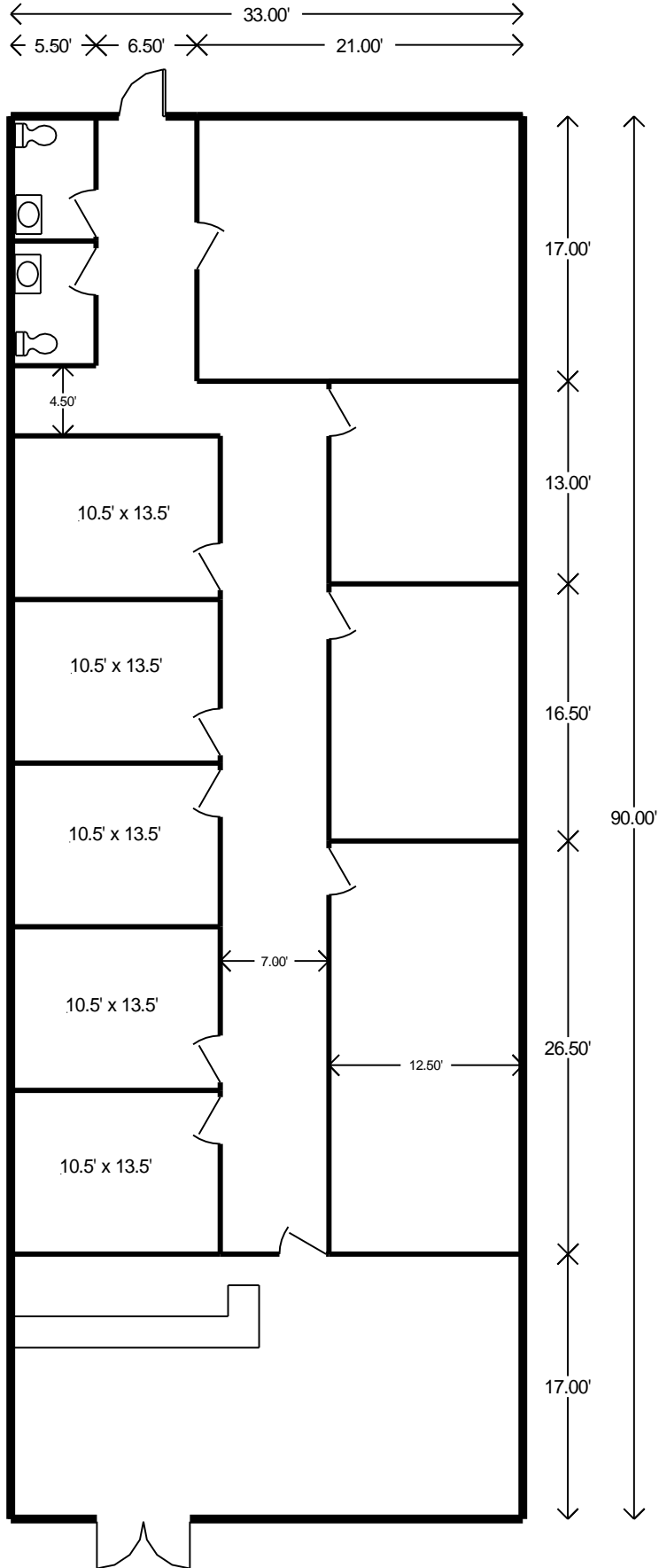
February 2025

The information presented herein has been furnished by the owner or obtained from sources we deem reliable. No warranties or representations, either expressed or implied are made as to the accuracy of the data provided, and same is subject to error, omission, change of price, and/or conditions of availability without notice.



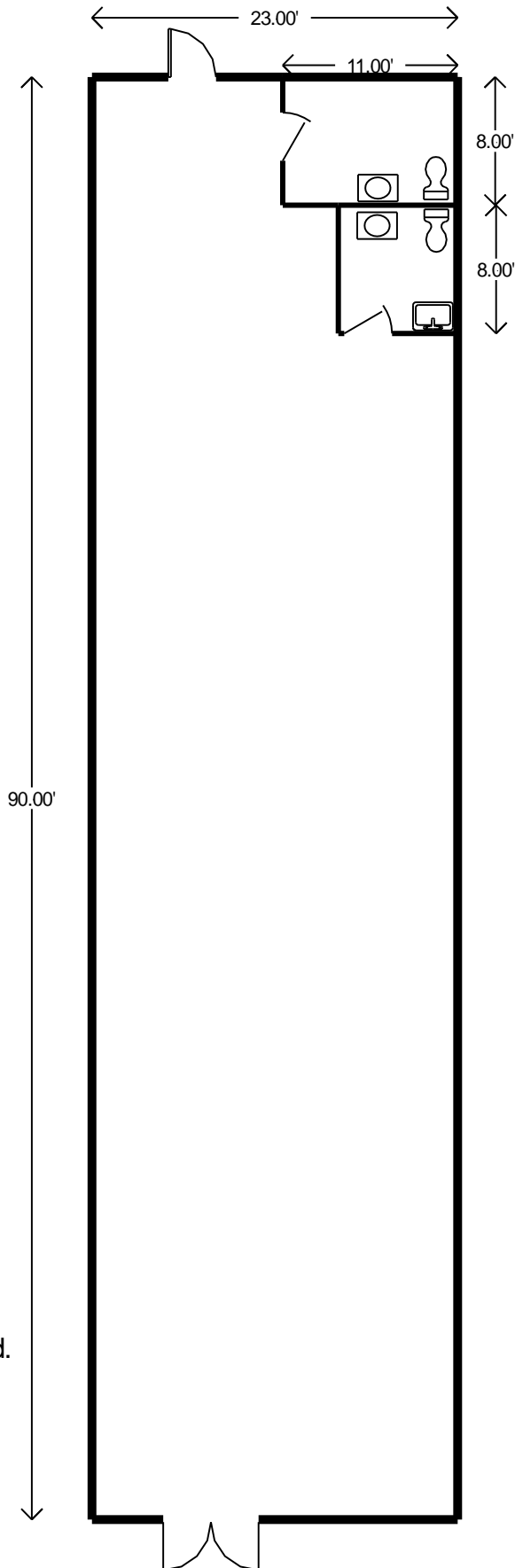


February 17, 2025



2645 Manhattan Blvd.  
Suite E2C  
Harvey, LA 70058  
2,970 square feet

February 18, 2025

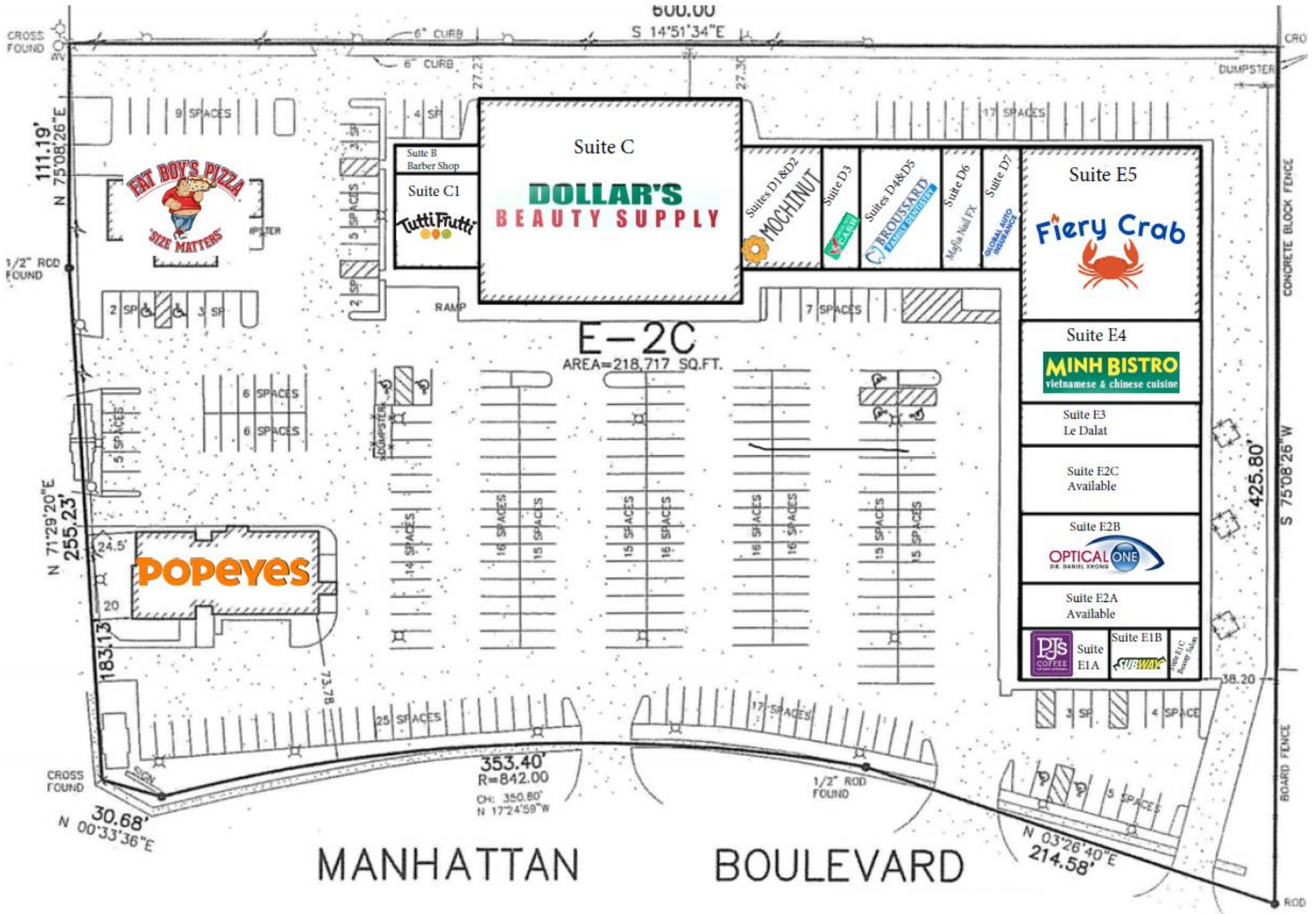


2645 Manhattan Blvd.  
Suite E2A  
Harvey, LA 70058  
Approx. 2,070sf

, LA.

LAPALCO BOULEVARD

LAPALCO BOULEVARD



MANHATTAN BOULEVARD

MANHATTAN BOULEVARD

E-2C  
AREA=218,717 SQ.FT.