



# AVAILABLE



## *For Lease Office Space Medical/Dental*



- Location:** 12-A Westbank Expwy, Gretna, LA 70053  
(Near Crescent City Connection)
- Suite 103:** 2,000sf space on the 1<sup>st</sup> floor with multiple doors directly to outside. 7 large offices with open areas. 2 private Restrooms. Asking \$2,500 per month
- Suite 201:** 2,200sf former Dental Office. Walk in condition. 2<sup>nd</sup> floor with elevator access. Asking \$2,350 per month
- Additional:**
- » Water & electric by Tenant
  - » Suites may be subdivided
  - » Tenant responsible for its own Janitorial

**JACK STUMPF  
& ASSOCIATES, INC.**

COMMERCIAL REAL ESTATE SERVICES

1700 Central Boulevard  
Harvey, Louisiana 70058  
(504) 366-6800  
[www.jackstumpf.com](http://www.jackstumpf.com)

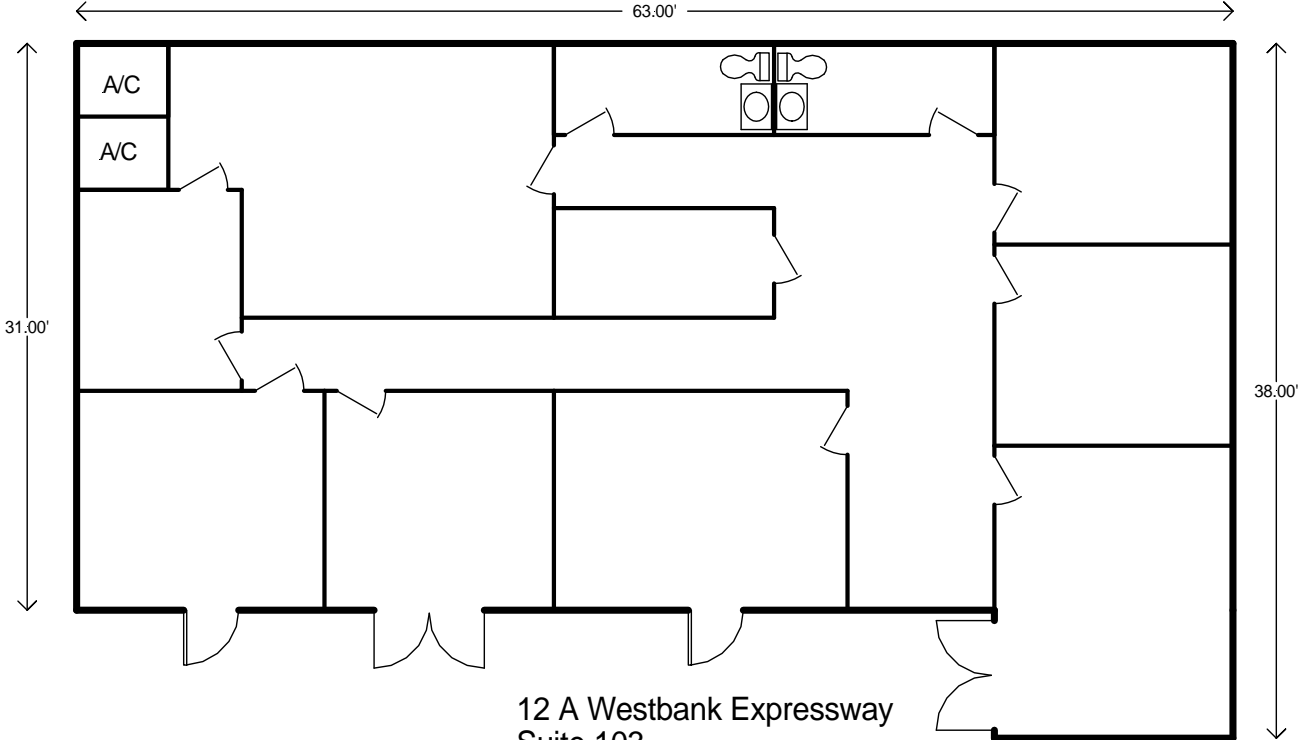
(Licensed in Louisiana)

**Listing Agent:** Jon Cerruti  
(504) 366-6800  
[jon@jackstumpf.com](mailto:jon@jackstumpf.com)

The information presented herein has been furnished by the owner or obtained from sources we deem reliable. No warranties or representations, either expressed or implied are made as to the accuracy of the data provided, and same is subject to error, omission, change of price, and/or conditions of availability without notice.

Feb 2019

January 23, 2019



12 A Westbank Expressway  
Suite 103  
Gretna, LA 70053  
2,044sf