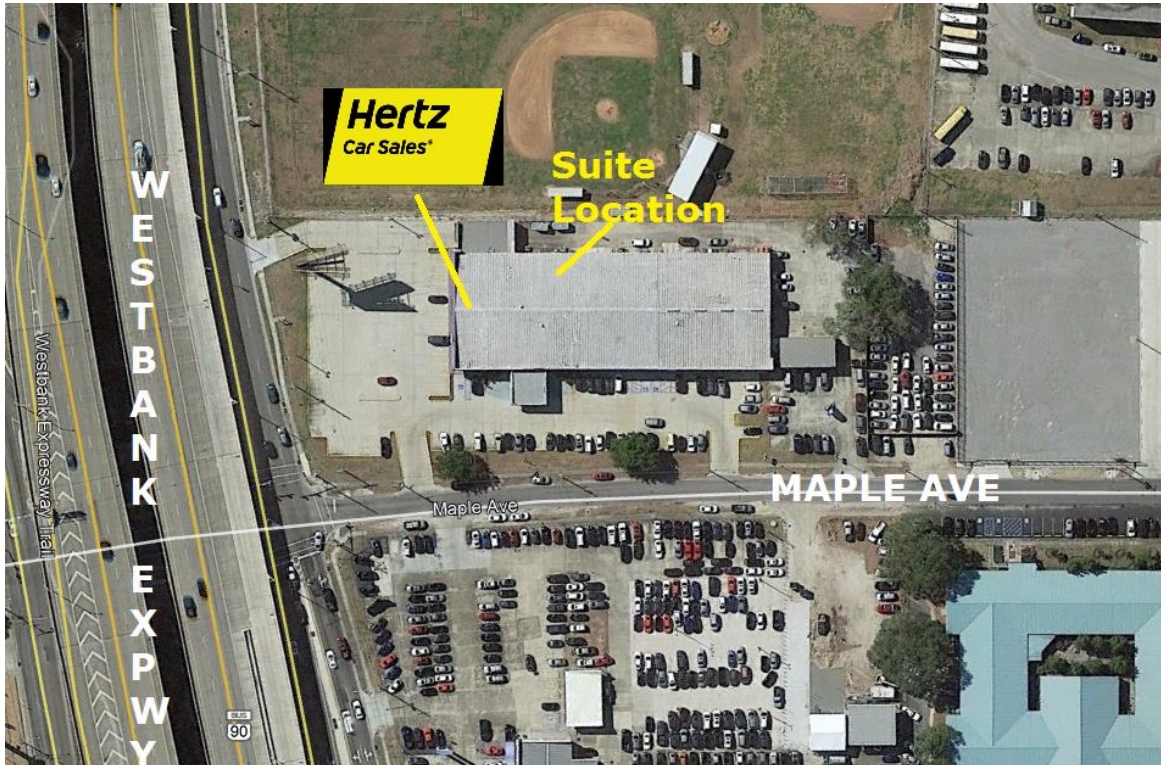




# AVAILABLE



## For Lease Office Space



**Location:** 1901 Westbank Expressway, Suite 600, Harvey, LA 70058  
(Corner of Westbank Expressway and Maple Avenue)

**Size:** 900sf

**Rent:** \$975.00 per month (includes all utilities)

**Description:**

- » Nice Office suite in multi-tenant building.
- » Consists of reception area, 2 private offices and file cabinet/work area
- » Common restrooms next to suite
- » Access to suite is from the Maple Ave side entrance

**JACK STUMPF  
& ASSOCIATES, INC.**

COMMERCIAL REAL ESTATE SERVICES

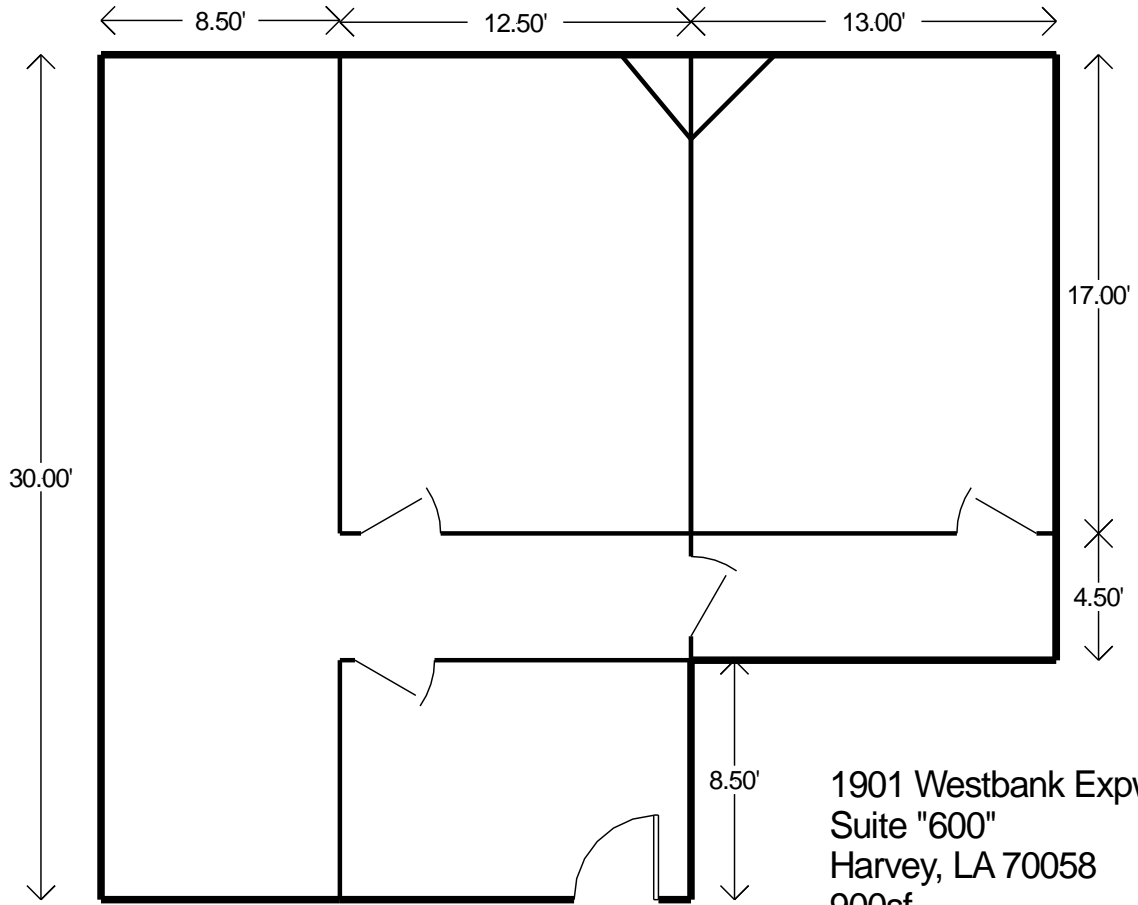
1700 Central Boulevard  
Harvey, Louisiana 70058  
(504) 366-6800  
www.jackstumpf.com

**Listing Agent:** Jack Stumpf

October 2020

The information presented herein has been furnished by the owner or obtained from sources we deem reliable. No warranties or representations, either expressed or implied are made as to the accuracy of the data provided, and same is subject to error, omission, change of price, and/or conditions of availability without notice.

October 19, 2020



1901 Westbank Expwy  
Suite "600"  
Harvey, LA 70058  
900sf