



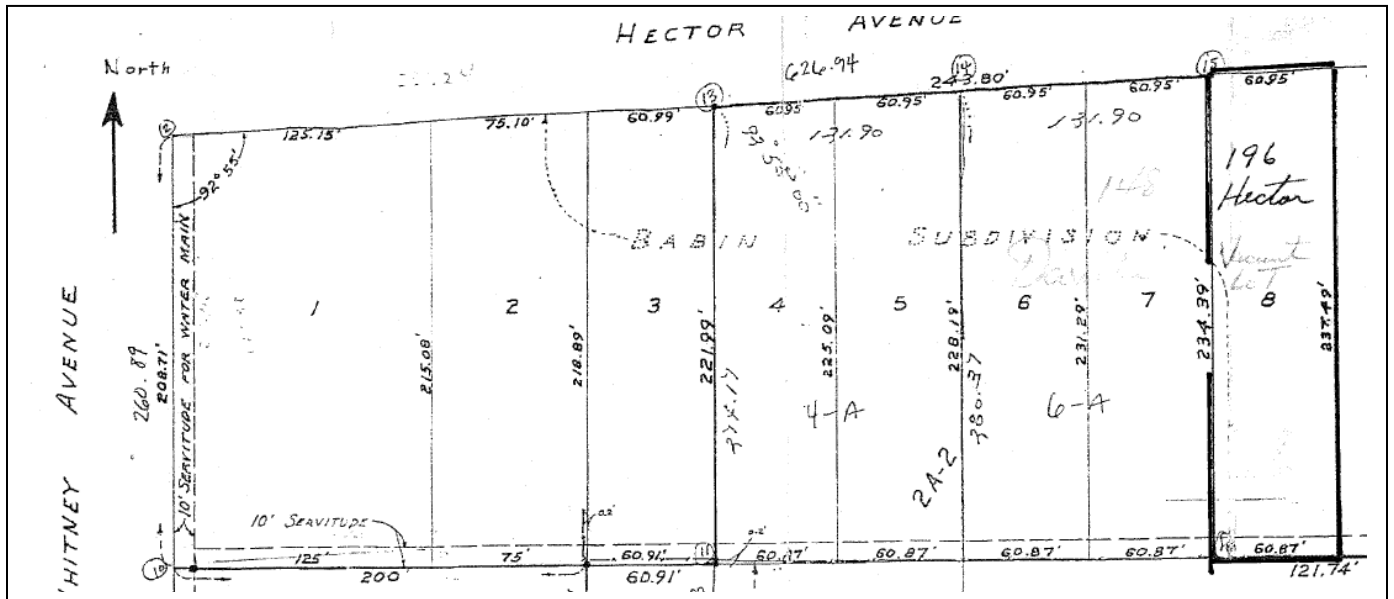
AVAILABLE



Hector Street Commercial Zoned Lot

Lot 8, Babin Subdivision, Jefferson Parish, LA
See plan Attached

- Lot: 60' x 234/237' as per survey
- Commercial Site, located directly next to Davita Dialysis Unit Zoned C-2 General Commercial as per J.P. Web Map Purchaser to independently confirm Zoning
- Offered at \$59,000.00



**JACK STUMPF
& ASSOCIATES, INC.**
COMMERCIAL REAL ESTATE SERVICES

1700 Central Boulevard
Harvey, Louisiana 70058
(504) 366-6800
www.jackstumpf.com

Contact: Joseph Maerke, CCIM
504-366-6800

Licensed In LA

The information presented herein has been furnished by the owner or obtained from sources we deem reliable. No warranties or representations, either expressed or implied are made as to the accuracy of the data provided, and same is subject to error, omission, change of price, and/or conditions of availability without notice.