



AVAILABLE



Large Land Parcel in Houma for Sale



Location: Vicari Street, Houma, LA 70364
(Adjacent to Oakshire Elementary School)

Asking Price: \$399,000.00 (approx. \$5,000.00 per acre)

Description: 79 acres of undeveloped land not far from the intersection of W Park Avenue and Bayou Gardens Boulevard. Minutes from Southland Mall, Rouses, AMC Movie Theatre, Sam's Wholesale and many other restaurants and retailers. The property is not zoned and thus can be used for residential or commercial purposes but highest and best use is probably a school site or residential subdivision.

**JACK STUMPF
& ASSOCIATES, INC.**

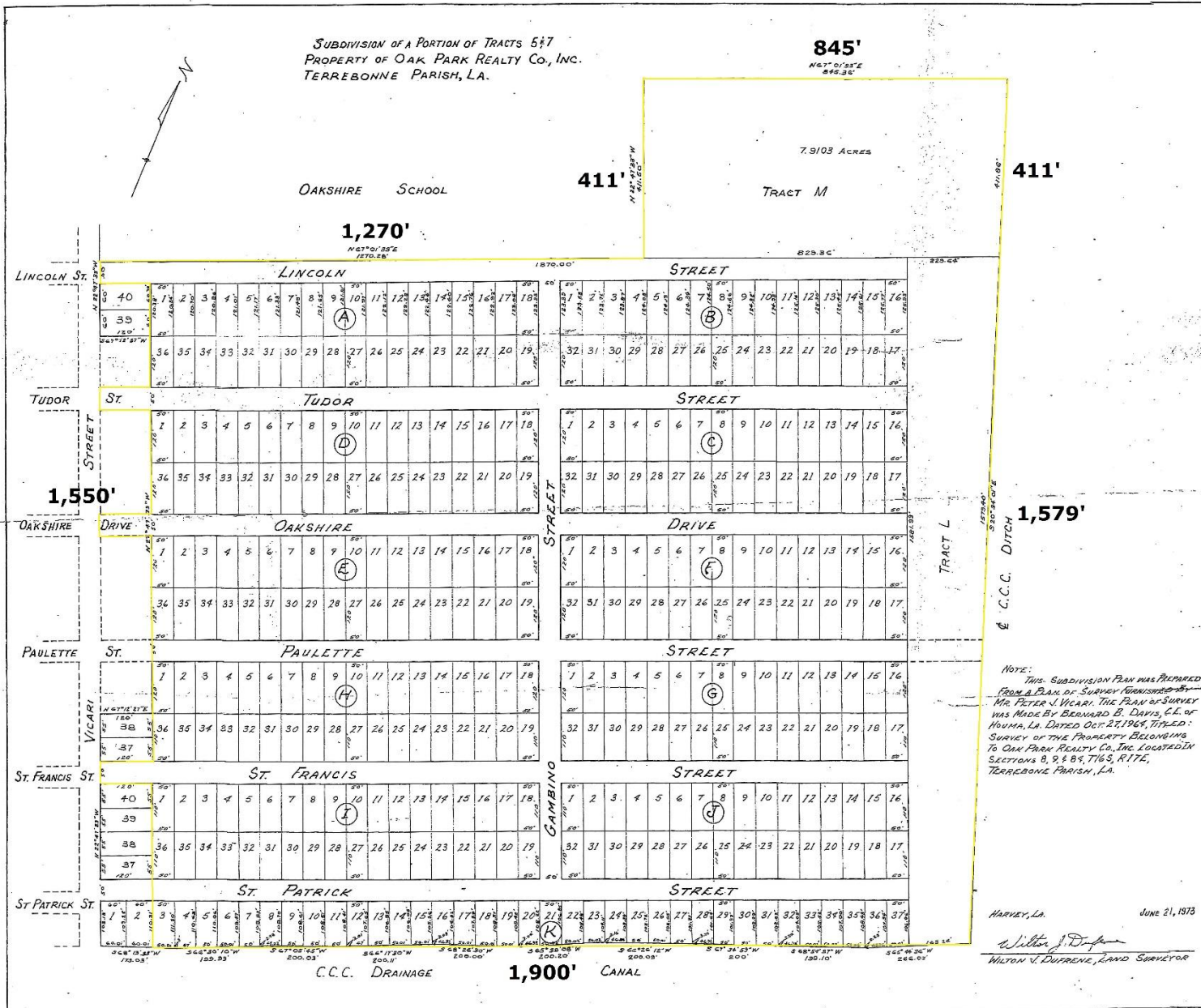
COMMERCIAL REAL ESTATE SERVICES

1700 Central Boulevard
Harvey, Louisiana 70058
(504) 366-6800
www.jackstumpf.com

Listing Agents: Lloyd Giardina & Jon Cerruti
(504) 366-6800

The information presented herein has been furnished by the owner or obtained from sources we deem reliable. No warranties or representations, either expressed or implied are made as to the accuracy of the data provided, and same is subject to error, omission, change of price, and/or conditions of availability without notice.

February 2020



*****All measurements are approximate to help give an idea of the configuration.
Buyer must survey the property to obtain accurate measurements*****