



AVAILABLE



FOR SALE

VACANT LOT

LOCATION: On Claire Avenue, Gretna, LA 70053.

Lot 39, portion B, Hero Subdivision, City of Gretna, Jefferson Parish.

SALE PRICE: \$ 85,000.00.

LOT SIZE: 19,059.00 Sq.Ft. (50.00' x 381.18')

ZONING: C-1 Neighborhood Commercial

CONTACT: *SONNY K. VUONG* 504-756-2381

Update: 8/23/2016



See reverse side for the sketch of the lot.

**JACK STUMPF
& ASSOCIATES, INC.**

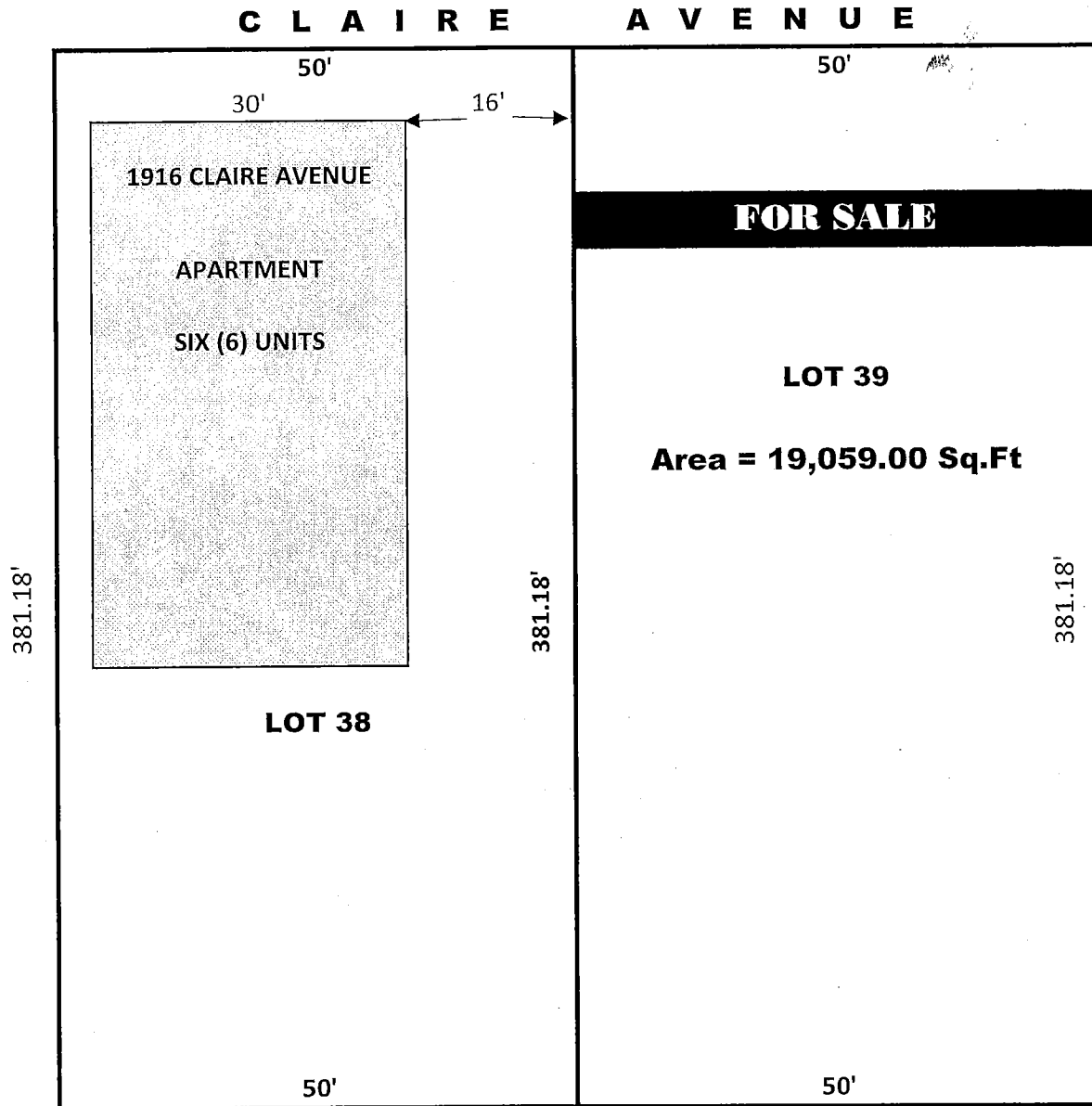
COMMERCIAL REAL ESTATE SERVICES

1700 Central Boulevard
Harvey, Louisiana 70058
(504) 366-6800
www.jackstumpf.com

The information presented herein has been furnished by the owner or obtained from sources we deem reliable. No warranties or representations, either expressed or implied are made as to the accuracy of the data provided, and same is subject to error, omission, change of price, and/or conditions of availability without notice.

SKETCH OF LOTS 38 AND LOT 39

Portion B, Hero Subdivision, City of Gretna, Jefferson Parish, LA



THIS SKETCH IS NOT TO BE SCALED.

FOR LEGAL USES, PLEASE REFER TO SURVEY (Available in file)

Sonny K. Vuong

Jack Stumpf & Associates, Inc.

504-366-6800 or 504-756-2381