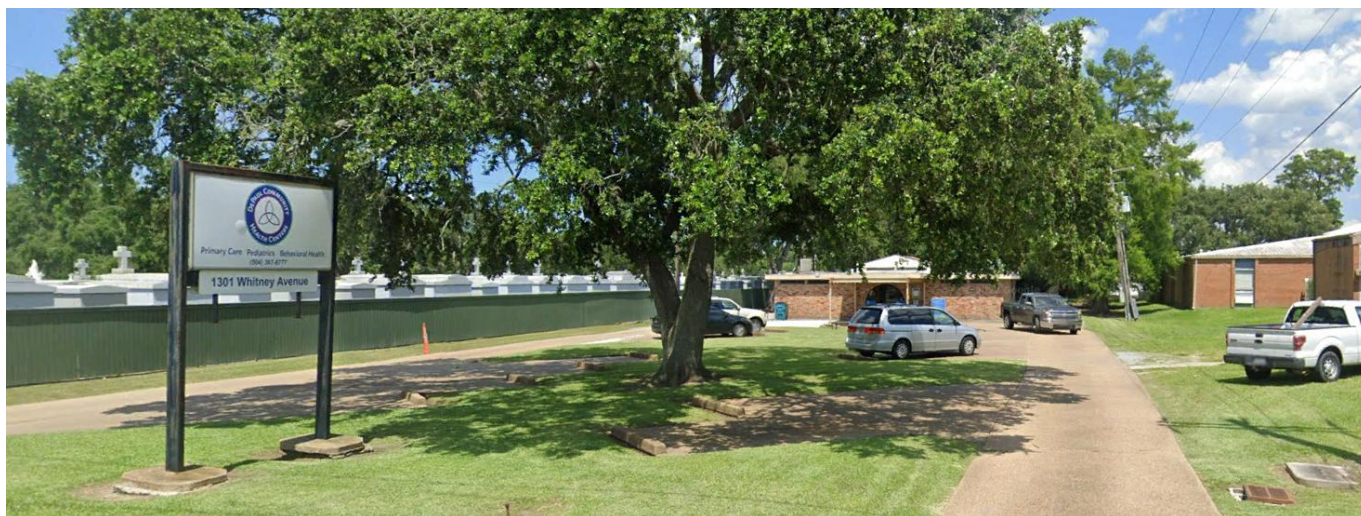




AVAILABLE



Medical Office Building For Lease



- Location:** 1301 Whitney Avenue, Gretna, LA 70056
(Adjacent to Gretna United Methodist Church)
- Lease Rate:** \$3,500.00 per month Modified Gross
(Tenant pays increases in taxes and insurance over the base year)
- Building Size:** 3,750sf
- Land Size:** 90' x 340'
Additional land available in the rear if needed, price to be negotiated
- Zoned:** R-2
- Description:** Medical Office building last used by DePaul Community Health Center. Parking in the front of the building with more land/parking in the rear. Contains 2 restrooms, couple of storage rooms, couple of offices, reception area, large open area, kitchenette and 10 exam rooms with sinks.

**JACK STUMPF
& ASSOCIATES, INC.**

COMMERCIAL REAL ESTATE SERVICES

1700 Central Boulevard
Harvey, Louisiana 70058
(504) 366-6800
www.jackstumpf.com

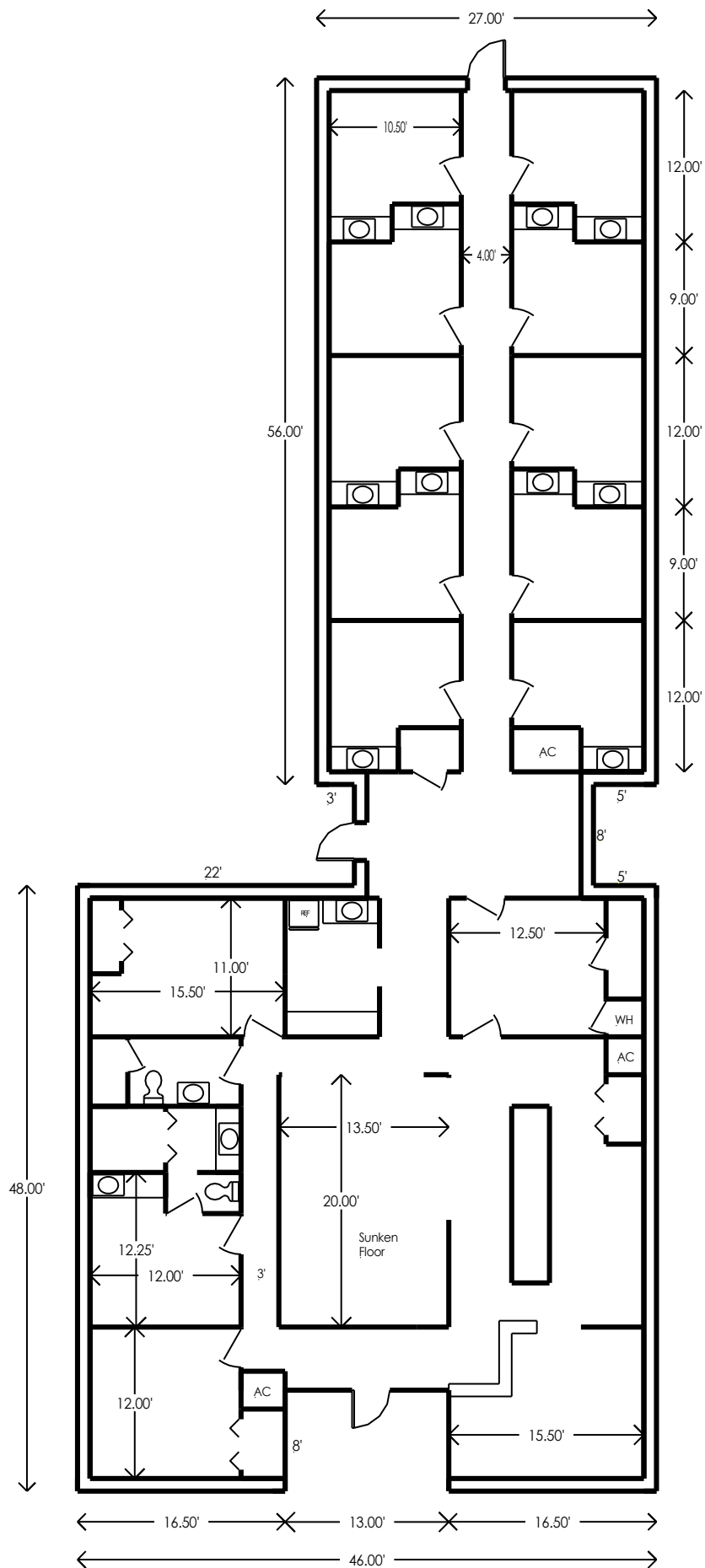
Listing Agents:

Jon Cerruti with Jack Stumpf & Assoc
(504) 366-6800 jon@jackstumpf.com

Sandy Sallettes with Century 21
(504) 451-2018 sandyC21@bellsouth.net

The information presented herein has been furnished by the owner or obtained from sources we deem reliable. No warranties or representations, either expressed or implied are made as to the accuracy of the data provided, and same is subject to error, omission, change of price, and/or conditions of availability without notice.

January 2025



1301 Whitney Ave
Gretna, LA 70056
Approx. 3,750sf

